



Legend

- Proposed Detour Route
- Original Route
- ★ Old Mill Road Bridge Closure

Service Layer Credits: Sources: Esri, HERE, Garmin, USGS, Intermap, INCREMENT P, NRCan, Esri Japan, METI, Esri China (Hong Kong), Esri Korea, Esri (Thailand), NGCC, (c)

Prepared On: 08.22.2024

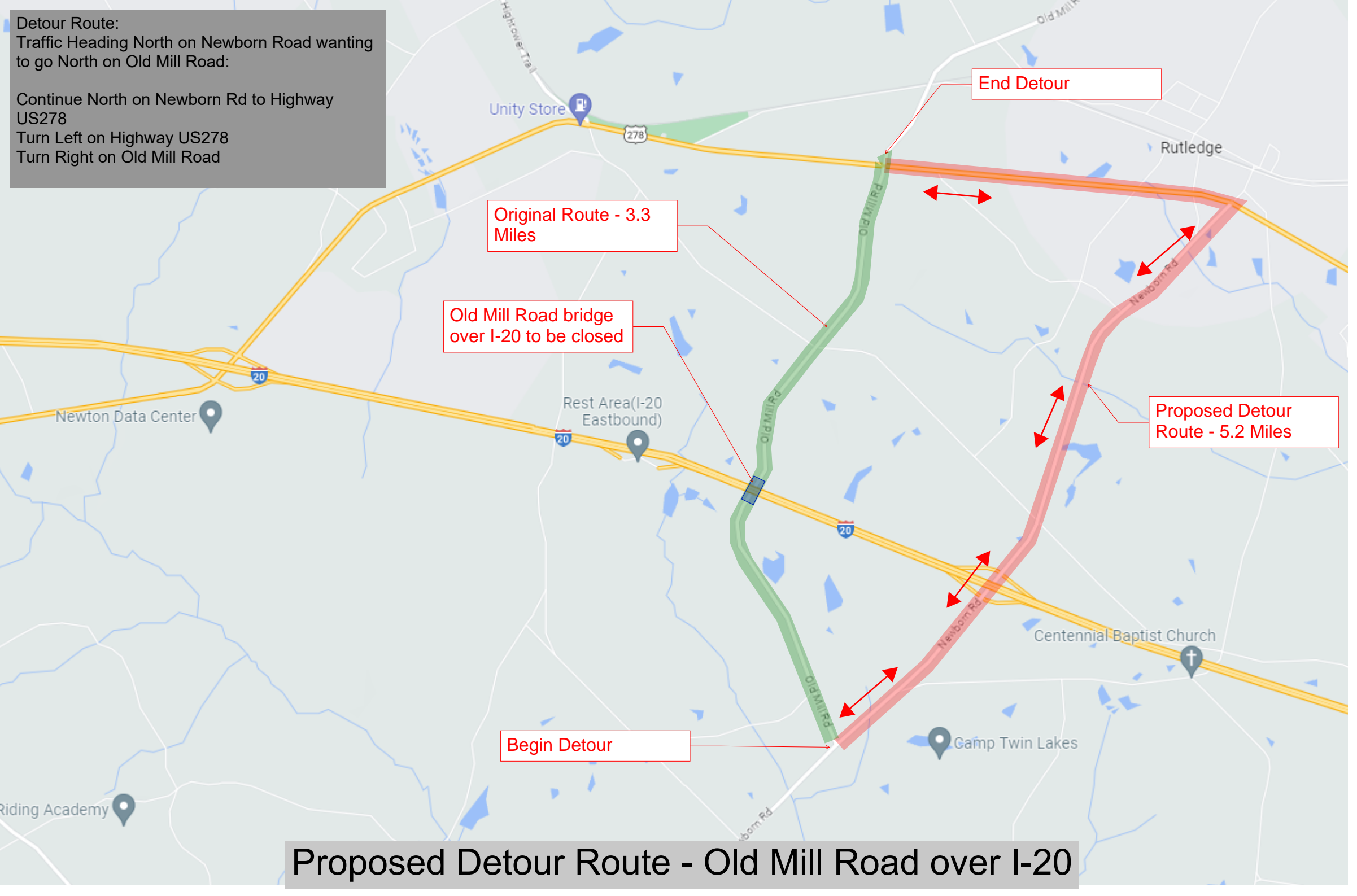
0 0.5 Miles

Interstate 20 at Old Mill Rd New Interchange Project
Morgan County, Georgia

Figure 1.0 **Proposed Detour Route**

Detour Route:
Traffic Heading North on Newborn Road wanting to go North on Old Mill Road:

Continue North on Newborn Rd to Highway US278
Turn Left on Highway US278
Turn Right on Old Mill Road



Original Route - 3.3 Miles

Old Mill Road bridge over I-20 to be closed

End Detour

Proposed Detour Route - 5.2 Miles

Begin Detour

Proposed Detour Route - Old Mill Road over I-20